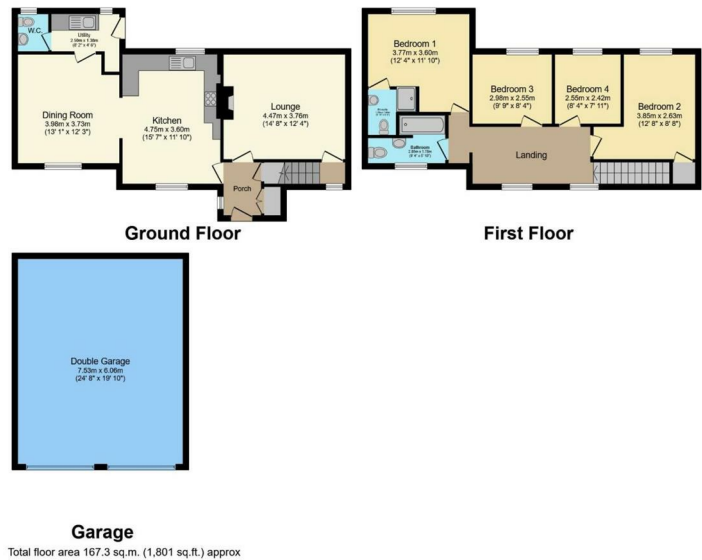


1 REDBRICK COTTAGES PARTRIDGE GREEN, CHELMSFORD CM1

OFFERS IN EXCESS OF £600,000

4 Bedrooms | 2 Bathrooms | 2 Receptions

Floor Plan



Area Map



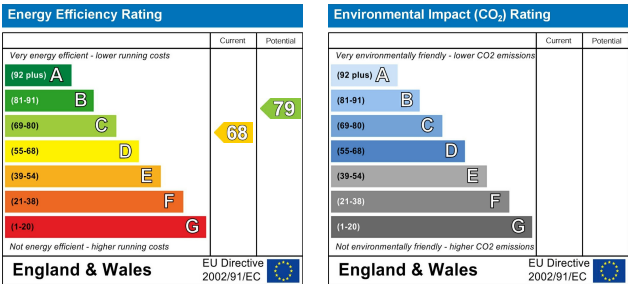
Accommodation

- FOUR BEDROOMS
- GENEROUS GARDEN
- HUGE POTENTIAL TO EXTEND STPP
- DOUBLE GARAGE (24' x 18')
- LARGE GATED DRIVEWAY
- CLOSE TO GOOD SCHOOLS
- SURROUNDING COUNTRYSIDE
- NEAR TO CITY CENTRE
- EXTENDED LIVING SPACE
- DOUBLE GLAZED

Viewing

Please contact us on 01376 386555 if you wish to arrange a viewing appointment for this property, or require further information.

Energy Efficiency Graph



Phone: 01376 386555
Email: info@branocsestates.co.uk
Website: www.branocsestates.co.uk

Phoenix House 5 New Street
 Braintree
 Essex
 CM7 1ER

Branocs endeavour to maintain accurate depictions of properties in Virtual Tours, Floor Plans and descriptions, however, these are intended only as a guide and purchasers must satisfy themselves by personal inspection.

